

# LM 2

## Bi-directional DMX/USB interface



**LM 2** is a bi-directional DMX / USB interface that allowing, the manage the signal in both directions, to operate as two different devices:

- Control of a lighting system from a computer
- Media Server to launch video from a console.

### LIGHTING CONTROL

In this mode, **LM 2** is inserted between a computer and the devices to be controlled (moving heads, scanner or spots). The computer uses a lighting control software (**ChamSys MagicQ**) that can emulate a lighting console, performing all steps to control, create groups and manage all types of installation, from the simplest and dimming control of lights, a whole groups live show using moving head, stage lights, etc. This advanced software with the interface, are a perfect alternative to traditional control lighting, eliminating the large physical consoles and offering a lightweight, easy and quick to connect and manage device.

### MEDIA SERVER

In this mode, **LM 2** obeys DMX signals sent by a physical console (connecting to a computer with appropriate software), launch videos, mix or interact with different effects.

With **LM 2**, the lighting designer has at his disposal a robust, portable and more likely operating in both live shows in small facilities such as halls, pubs, etc. that do not require prior knowledge of lighting control, and that simply making a schedule, it can be performed easily with a few simple mouse clicks, eliminating complex, large and expensive lighting consoles.

### Features

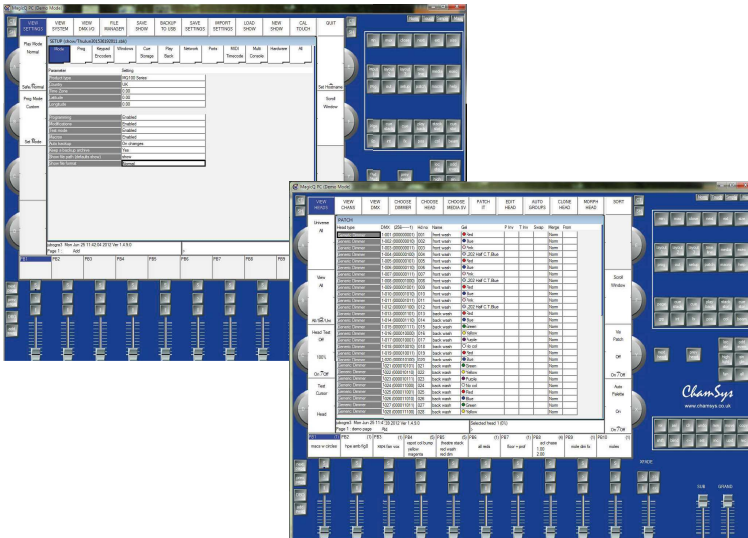
- Bi-directional DMX/USB interface
- Control up to 512 DMX channels
- Lighting control software (Chamsys MagicQ) (free download).
- 1500V total isolation (data and supply lines in order to protect the computer against overloads
- USB port compatible 1.1 y 2.0
- Drivers for Windows, OSX and Linux.
- Mains supply: 300 mA (via USB).

### Specifications

<b>Type:</b>	Bi-directional DMX/USB interface
<b>Operating modes:</b>	Lighting control /Media Server
<b>Control software:</b>	Chamsys MagicQ (Lighting control)
<b>DMX channels:</b>	1 Universe (512 DMX channels)
<b>OS compatibility:</b>	Drivers for Windows, OSX, Linux
<b>Amains supply:</b>	5V dc, 300 mA (via USB port)
<b>Dimensions:</b>	80 x 45 x 54 mm
<b>Weight:</b>	300 g

**LM 2**

**Control Software**



The control software MagicQ ChamSys, allows to emulate a lighting console for creating all type of facilities and control thanks to **LM 2** interface.

The drivers for different operating systems: Windows, OSX and Linux can be downloaded from **Equipson** website.

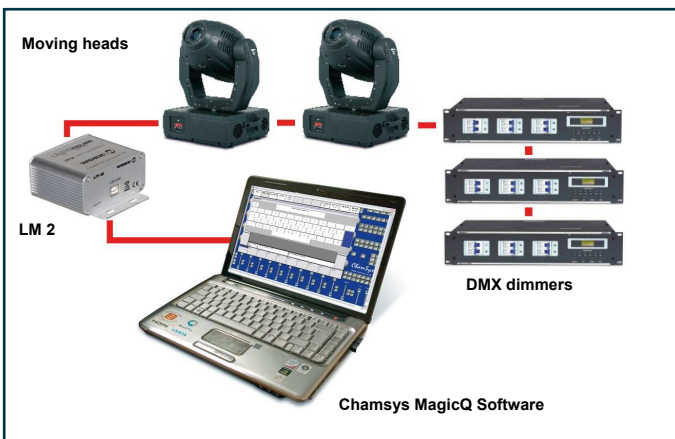
**Chamsys MagicQ software:**

Direct download

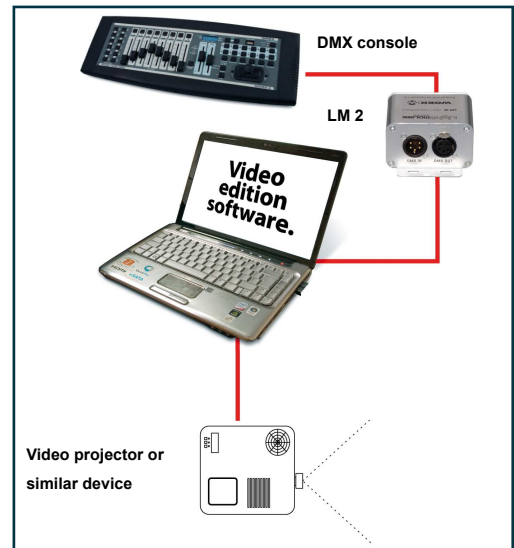
<http://www.chamsys.co.uk>



**Installation examples**



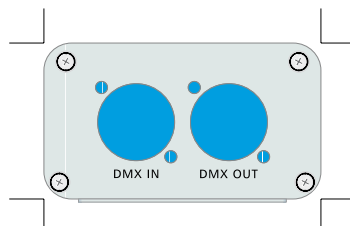
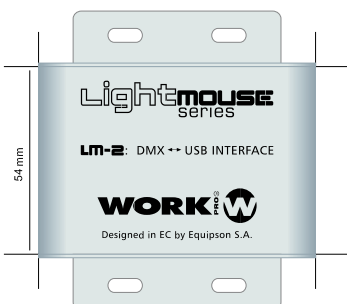
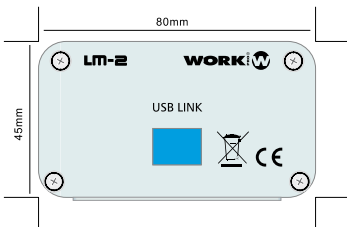
Connection system using **LM 2** as lighting controller. From a computer and MagicQ ChamSys software is possible to create any type of installation to lighting system control, as much spots as robots.



**LM 2** connecting to operate as Media Server from a physical console, it is possible to run video, edit and mix with a video editing software.

**Dimensions**

\* In mm.



Rev. 12.06.01