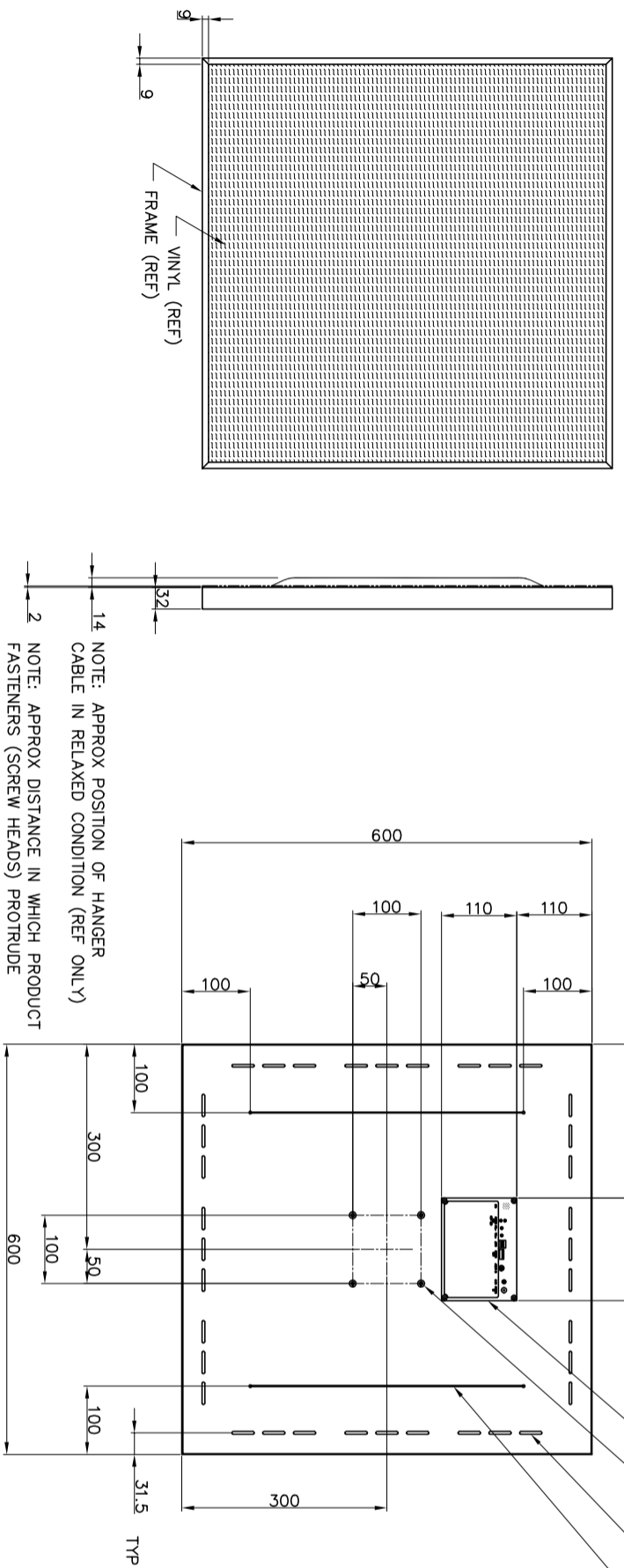
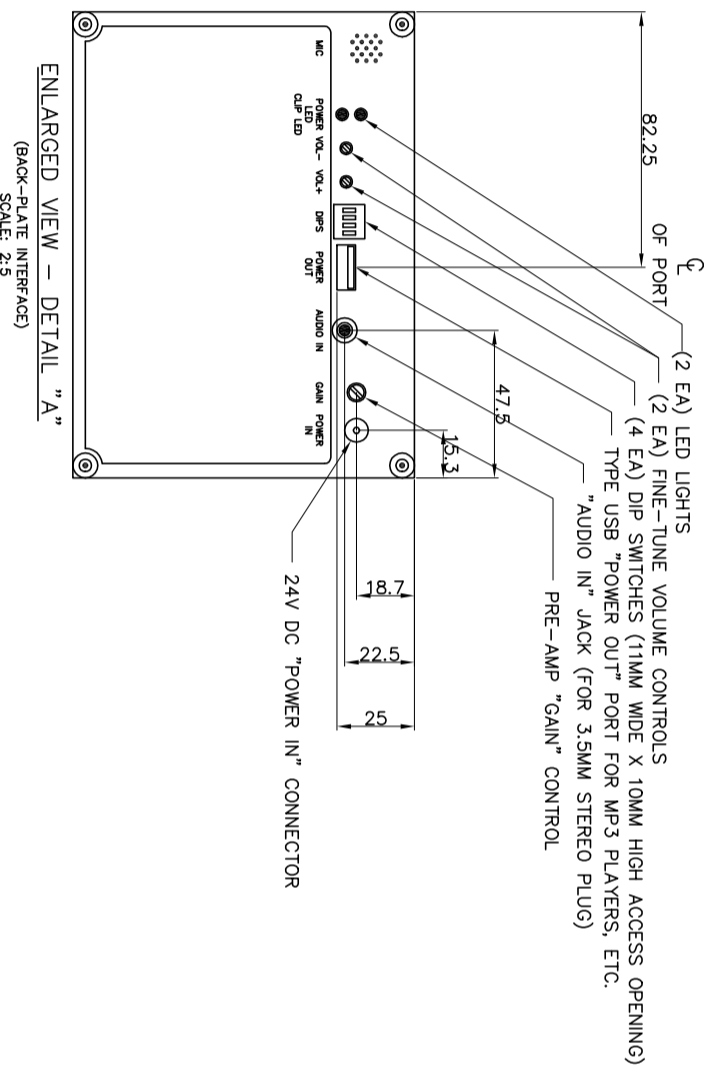


- Standard accessory items supplied with Sound Shower units include:
1. AC power adapter (24V DC output) and detachable AC power cord (length 2 m approx.)
 2. Ø1,5 mm hanger wire (length 5 m approx.)
 3. 2 metal hangers and 2 plastic wire locks



SOUND SHOWER DIMENSIONAL SPECIFICATION LAYOUT DRAWING - INSTALLATION REFERENCE ONLY -

Also following product without the amplifier unit have the same outer dimensions: SSHP-60X60

Osg Part		Koodi Code	Rev Description	Materiaali, Kokko/Muoto Material, Size/Shape	Standard/Luettelo Standard/Catalog	Massa Kg Mass	Kol Pcs
Yleistoleranssit General Tolerances		ISO 2768 - m		PANPHONICS		3 Kg	
Subide Scale		1:10		Kokko/Muoto: SSH-60X60		Kokko/Muoto: White /Grey /Black	
Sivut Sheet:		1/1		Koodi Code: 418 - 420		Päiväys/Date: 16.8.2010	
Lisäyksiä Included:		A3		Revisio/Revision:		Suunn./By: tai	
Muutokset Changes		Pvm./Date		Muutokset/Changed		Hyv. Appro.	
Revisio/Revision							