



invisible loudspeakers

PRODUCT OVERVIEW

Evolution “i” Series

High performance ‘vibrational surface’ invisible loudspeakers for residential and high end corporate and leisure spaces. The new “i” series upgrade to the Evolution line is now fully available across the entire range.

AIW150i



AIW350i



AIW450i



Model Number

Dimensions

Weight

Nominal Impedance

Frequency Response

Sensitivity (@1m / 2.83Vrms)*

Connection

In-line protection unit

Fixing requirement

Power Handling (continuous/peak)

Manufacturer warranty

Example applications

AIW150i

450mm x 345mm x 40mm (17^{3/4}" x 13^{5/8}" x 1^{5/8}")

1.14kg (2.51lbs)

8 Ohms

105Hz - 20kHz (-6dB)

83dB

Twin blue butt-splice crimp terminal (suitable for 1.5mm² - 2.5mm / 16-14AWG cable thickness)

APU150

BackboxCV345 / BackboxSW345 / Firehood345/ Basic fixing

15W / 30W

10 years (residential systems)
5 years (commercial systems)

Bedrooms, Hall, ancillary spaces

AIW350i

450mm x 345mm x 40mm (17^{3/4}" x 13^{5/8}" x 1^{5/8}")

1.33kg (2.93lbs)

8 Ohms

105Hz - 20kHz (-6dB)

84dB

Twin blue butt-splice crimp terminal (suitable for 1.5mm² - 2.5mm / 16-14AWG cable thickness)

APU350

BackboxCV345 / BackboxSW345 / Firehood345/ Basic fixing

30W / 60W

10 years (residential systems)
5 years (commercial systems)

All general living spaces

NEW

AIW450i

450mm x 345mm x 40mm (17^{3/4}" x 13^{5/8}" x 1^{5/8}")

2.06kg (4.55lbs)

2 x 8 Ohms

105Hz - 20kHz (-6dB)

84dB

Twin blue butt-splice crimp terminal (suitable for 1.5mm² - 2.5mm / 16-14AWG cable thickness)

APU350

BackboxCV345 / BackboxSW345 / Firehood345/ Basic fixing

2x30W/60W

10 years (residential systems)
5 years (commercial systems)

Two channel device,
bathrooms etc

NEW

The Evolution series, itself launched in 2012, saw a dramatic step increase in performance from our previous generation of high performance products. The “i” upgrade continues to refine the harmonic clarity of what today represents the pinnacle of Invisible audio solutions.

AIW550i



AIW550i

450mm x 345mm x 40mm (17^{3/4}" x 13^{5/8}" x 1^{5/8}")

1.58kg (3.49lbs)

4 Ohms

105Hz - 20kHz (-6dB)

87dB

Twin blue butt-splice crimp terminal (suitable for 1.5mm² - 2.5mm / 16-14AWG cable thickness)

APU550

BackboxCV345 / BackboxSW345 / Firehood345/ Basic fixing

50W / 100W

10 years (residential systems)
5 years (commercial systems)

Home cinema spaces & loud party rooms

AIW750i



AIW750i

— one panel of each of these sizes —

HF: 1.36Kg (3lbs) LF: 1.46Kg (3.22lbs)

4 Ohms

50Hz - 20kHz (-6db)

87dB

Twin blue butt-splice crimp terminal (suitable for 1.5mm² - 2.5mm / 16-14AWG cable thickness)

APU750i

BBCV, FH or SW345 & S200

100W/ 200W

10 years (residential systems)
5 years (commercial systems)

The ultimate audiophile listening

AIW150i-S200



AIW150i-S200

450mm x 200mm x 40mm (7^{3/4}" x 7^{7/8}" x 1^{5/8}")

0.83kg (1.83lbs)

8 Ohms

105Hz - 20kHz (-6dB)

83dB

Twin blue butt-splice crimp terminal (suitable for 1.5mm² - 2.5mm / 16-14AWG cable thickness)

APU150

BBCV200 / SW200/ FH200/ Basic fixing kit

15W / 30W

10 years (residential systems)
5 years (commercial systems)

Narrow interstud widths, bedroom etc

AIW350i-S200



AIW350i-S200

450mm x 200mm x 40mm (7^{3/4}" x 7^{7/8}" x 1^{5/8}")

1.06kg (2.33lbs)

8 Ohms

105Hz - 20kHz (-6dB)

84dB

Twin blue butt-splice crimp terminal (suitable for 1.5mm² - 2.5mm / 16-14AWG cable thickness)

APU350

BBCV200 / SW200/ FH200/ Basic fixing kit

30W / 60W

10 years (residential systems)
5 years (commercial systems)

Narrow interstud widths, All general living

Discreet subwoofer range

Amina offer a range of three sub-woofer products aimed at complimenting the Amina Evolution and the iQ invisible loudspeaker ranges. These unique low frequency devices have one important detail. they are all designed to be embedded

within the infrastructure of a building to effectively allow them to disappear in to an environment. The only visible evidence is the existence of a very discreet small port into the space. In many cases this port can be hidden from view by furniture or lighting soffits. All products feature a wide, flat frequency response designed specifically to integrate with Amina invisible speakers.



Model Number	ALF40	ALF80	NEW ALF120 NEW
Dimensions	358mm x 159mm x 134mm (14 ^{1/5"} x 5 ^{1/3"} x 6 ^{1/3"})	605mm x 270mm x 156mm (23 ^{4/5"} x 10 ^{3/5"} x 6 ^{1/10"})	1605mm x 345mm x 118mm (63 ^{1/5"} x 13 ^{1/2"} x 4 ^{3/4"})
Product weight	3.25Kg (7.17lbs)	9.2Kg (20.28lbs)	17.5Kg (38 ^{37/64} lbs)
Nominal impedance	8 Ohms	4 Ohms	6 Ohms
Power handling (continuous/peak)	40W continuous	150W continuous	50W continuous
Frequency response	60Hz - 150Hz (+/-6db) 18dB/octave band-pass	36Hz - 140Hz (+/-6db) 18dB/octave band-pass	27Hz - 120Hz (=/-6db) 29Hz - 101Hz (+/-3db)
Efficiency	88dB @ 1m/ 2.83Vrms (half space)	86dB @ 1m/ 2.83Vrms (half space)	96dB @ 1m/ 2.83Vrms (half space)
Max SPL	103dB @ 1m (half space)	103dB @ 1m (half space)	111dB @ 1m (Quarter space)
Design	Ported, acoustic band-pass with built-in protection circuit	Ported, acoustic band-pass with built-in protection circuit	Hybrid Quarter Wave / Transmission Line
Port location	Front or side convertible, length adjustable	Front or side convertible, length adjustable	Front or base convertible
Port diameter I.D/ O.D	39mm (1 11/20") / 43mm (7/10")	50.5mm (2") / 55.5mm (21/5")	305mm x 14mm (12" x 2/16")
Hole cut-out for port trim	48mm (17/8")	48mm (17/8")	
Connection	3- way binding post (4mm plug, spade or bare wire)	3- way binding post (4mm plug, spade or bare wire)	3- way binding post (4mm plug, spade or bare wire) Bi-wire for future upgrades only

iQ Series

Low impedance VPT loud speakers with an aggressive price/performance point for volume applications. Mirrors the lower power members of the Evolution i-series.

iQ1



iQ2



iQ3



Model Number	iQ1	iQ2	iQ3
Dimensions	400mm x 300mm x 40mm (15 ^{3/4} " x 11 ^{4/5} " x 1 ^{3/5} ")	400mm x 300mm x 40mm (15 ^{3/4} " x 11 ^{4/5} " x 1 ^{3/5} ")	400mm x 300mm x 40mm (15 ^{3/4} " x 11 ^{4/5} " x 1 ^{3/5} ")
Weight	0.83kg (1.83lbs)	1.08kg (2.38lbs)	0.92kg (2.03lbs)
Nominal Impedance	8 Ohms	8 Ohms	2 x 8 Ohms
Frequency Response	112Hz - 20kHz (-6dB)	112Hz - 20kHz (-6dB)	112Hz - 20kHz (-6dB)
Sensitivity (@1m / 2.83Vrms)*	83dB	84dB	84dB
Connection	Twin blue butt-splice crimp terminal (suitable for 1.5mm2 - 2.5mm / 16-14AWG cable thickness)	Twin blue butt-splice crimp terminal (suitable for 1.5mm2 - 2.5mm / 16-14AWG cable thickness)	Twin blue butt-splice crimp terminal (suitable for 1.5mm2 - 2.5mm / 16-14AWG cable thickness)
In-line protection unit	iQP150 or APU8RSE	iQP350 or APU8RSE	APU350 or APU8RSE
Fixing requirement	BackboxCV300 / BackboxSW300 / Firehood300/ Basic fixing	BackboxCV300 / BackboxSW300 / Firehood300/ Basic fixing	BackboxCV300 / BackboxSW300 / Firehood300/ Basic fixing
Power Handling (continuous/peak)	15W / 30W	2x30W/60W	30W / 60W
Manufacturer warranty	10 years (residential systems) 5 years (commercial systems)	10 years (residential systems) 5 years (commercial systems)	10 years (residential systems) 5 years (commercial systems)
Example applications	Bedrooms in MDU's or multi room systems	Bathroom and galley kitchens	Music and surround sound in MDU's

LfiE Series

High performance invisible loudspeakers for 100/70V line commercial applications. These are fitted with high quality torriodal transformer to minimize degradation of sound quality commonly seen on 100V lines. The dispersive nature of VPT loudspeakers means that typically 2-4 fewer speakers are required to provide even coverage over a large area compared to conventional loudspeakers.

Applications for both LFi2T and 4T are hotels, restaurants, high end retail.

Lfi2eT



Lfi4eT



Model Number

Dimensions

Weight

Available Input Tappings

Frequency Response

Dispersion Angle (HxV)

Active Radiating Area

Sensitivity

MAX SPL

Connection

Backbox (optional)

Required External Filtering

Manufacturer warranty

Lfi2eT

400mm x 300mm x 40mm (15³/₄" x 11⁴/₅" x 13⁵/₈"

1.16kg (2.56lbs)

100V Line: 10W, 20W / 70V Line: 10W, 20W

110Hz - 15.6kHz (-6dB)

180 ° x 180 ° (-6dB)

120,000mm² (186in²)

84dB

93dB 1m/ 20W

Professional blue butt splice crimp terminal (suitable for 1.5mm² to 2.5mm² / 16-14 AQG cable thickness)

Backbox CV300 / Backbox SW300

24dB/octave high pass filter at 80Hz or higher

10 years (residential systems)

5 years (commercial systems)

Lfi4eT

400mm x 300mm x 40mm (15³/₄" x 11⁴/₅" x 13⁵/₈"

1.26g (2.78lbs)

100V Line: 10W, 20W / 70V Line: 10W, 20W

110Hz - 15.6kHz (-6dB)

180 ° x 180 ° (-6dB)

120,000mm² (186in²)

85dB 1m / 1W

101dB 1m/ 40W

Professional blue butt splice crimp terminal (suitable for 1.5mm² to 2.5mm² / 16-14 AQG cable thickness)

Backbox CV300 / Backbox SW300

24dB/octave high pass filter at 80Hz or higher

10 years (residential systems)

5 years (commercial systems)

Accessories



APU-RS8E

For 19" rack based systems, the APU-RS8E is ideal. Featuring 8 channels of 'off board' speaker protection, each individual channel can be customised for the Evolution, LFieT and iQ Series speakers. The APU-RS8E should be used in place of the 2-channel APU products.

Note: when ordering the APU-RS8E add the "N" suffix to the part numbers to exclude the 2-channel APU.



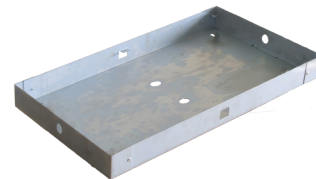
BackboxCV CV345/CV300/CV200

Our standard plasterboard/drywall installation backbox for Evolution, iQ, LFieT and AIWX Series speakers, the BackboxCV provides an average of 21dB sound reduction across the 150 Hz – 5 KHz range.



BackboxFH FH345/FH300/FH200

Constructed from a specially designed flame and heat resistant material, incorporating an intumescent seal, the BackboxFH can be used in conjunction with the BackboxCV where a 60 minute fire rating is required.



BackboxSW

SW345/SW300/SW200

A heavy duty, steel back box for installation of Amina Technologies Invisible Loudspeakers into solid structures, e.g. bricks, concrete.



APU 150/ 350/ 550

2 channel protection unit for Evolution Series AIW150i, AIW350i and AIW550i speakers.



APU 750i

Dual channel protection unit for AIW750i two panel speaker.



iQP1/2/3

Dual channel protection unit for iQ Developer Series speakers.

DISTRIBUIDOR EM PORTUGAL

R. Sá de Figueiredo 6 –
C 2790-233 Carnaxide

Telef. (+351) 21 417 76 21 Fax. (+351) 21 030 00 31

Web: www.sislite.pt - email: geral.sislite@sislite.pt