

# Product Data Sheet

## APP434W

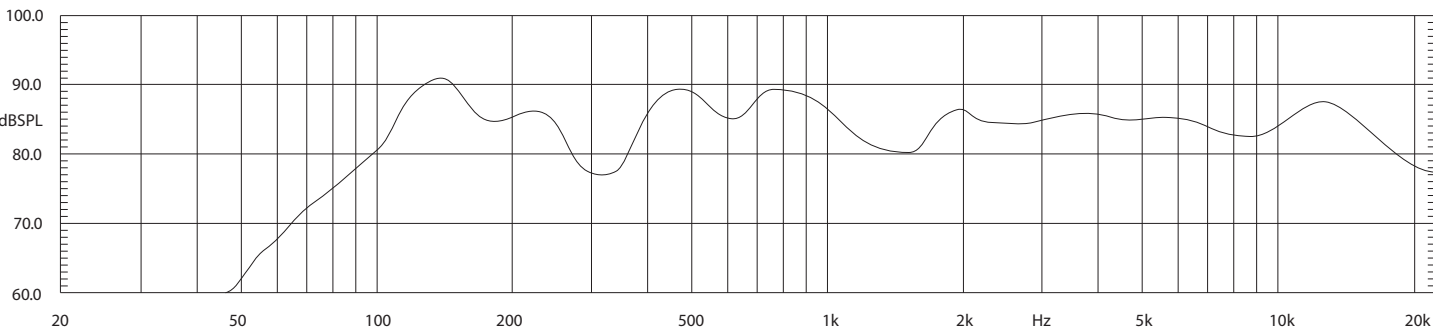
Ceiling mount loudspeaker

**Application:**  
The Amina APP434W is a slim-line, ceiling mount loudspeaker for corporate, leisure, heritage, retail, theatre and conferencing locations requiring discrete sound reproduction systems. Utilising Amina’s revolutionary flat panel technology, the APP434W is designed to be mounted behind a perforated steel ceiling tile to provide high quality and invisible sound.

**Sound characteristic:**  
Using the principle of distributed mode vibrations, the APP434W creates a widely dispersed and diffuse sound output. The benefits are consistent sound pressure level in the room and excellent intelligibility on and off axis.



On Axis Frequency Response (2.83Vrms/1m)



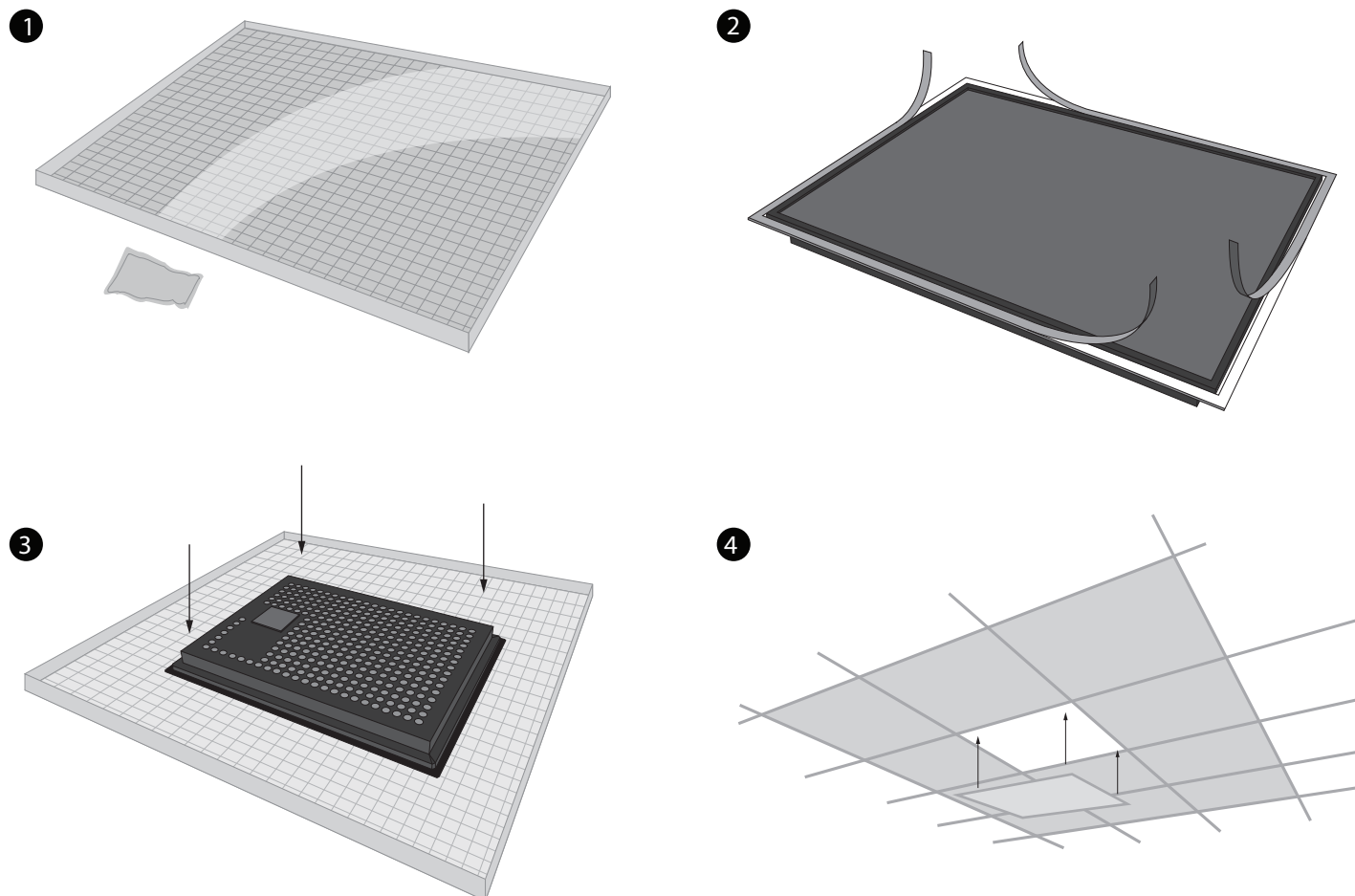
Specifications	APP434W
Dimensions	426 x 326 x 34mm
Product weight	1.3kg (1.8Kg with transformer)
Acoustic panel composition	Blown glass and phenolic resin core between melamine skins w/ black vinyl face
Speaker fixing	Foam adhesive on front lip to bond speaker to back of steel tile
Max SPL	102dB @ 1m
Impedance	8Ohms
Frequency response	100Hz - 20KHz (+/-8dB) NB: Actual HF response depends on ceiling tile perforation size
Efficiency	86dB @1m / 2.83Vrms
Dispersion Angle	150 degrees
Power handling	40W max (80Hz, 24dB/octave high-pass must be used)
High impedance option	5W, 10W, 20W transformer options available for 70V or 100V systems

# Product Data Sheet

## APP434W

### Ceiling mount loudspeaker

Installation procedure:



- 1** Clean the back of the perforated steel ceiling tile to remove all dirt and grease.
- 2** Remove the backing from the adhesive tape on the front mounting lip.
- 3** Adhere the mounting lip to the rear of the ceiling tile ensuring it is in the centre. Press down firmly on the rear of the mounting lip to ensure a secure bond.
- 4** Carefully mount the ceiling tile with the APP434W attached to the ceiling grid and connect the speaker cable.

Distribuidor em Portugal

SISLITE Lda  
Rua Sá de Figueiredo 6 C, 2790-233 Carnaxide  
Tel: 21 417 76 21  
Fax: 21 030 00 31  
Email: geral.sislite@sislite.pt  
Web: www.sislite.pt

v1.4 April 2011 © Amina Technologies Ltd

*amina*®  
TECHNOLOGIES LTD